

MI-TRALE NEWS

P.O. Box 43

Ontonagon, MI 49953-0043

November 2015

www.mi-trale.org

BOARD of DIRECTORS

PRESIDENT – Don Helsel dhelsel1@charter.net VICE-PRESIDENT – Jim Altenburg 906-235-4856 meaandme12@gmail.com
SECRETARY – Linda Schulz lschulz@runningbearresort.com TREASURER – Dave Bishop mitrale49953@gmail.com

DIRECTORS - Russ Diethert rfd403@aol.com - Cindy Grams peppermillgrams@charter.net
Khris Kennedy kkennedy64@yahoo.com - Kim Sims southernbelleofmi6372@yahoo.com
Cathy Wainio cndwainio@yahoo.com



From Under the Presidents Helmet

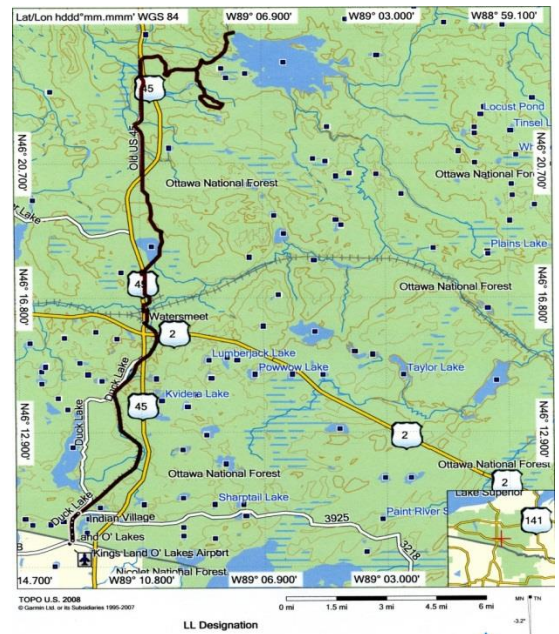
Here we are winding down another great year for MI-TRALE. Together we have accomplished a lot this year, but it always seems that we have more left to do. I guess time goes by quickly when you are having fun.

Some of our accomplishments for 2015 are:

- Over 300 miles of designated trails
- Manage over 550 miles of trails in total
- Managed over \$80,000 of DNR maintenance grant funds to improve your trails
- Built our membership base from 150 to 275 members!
- Placed Geocaches on the Courtney Equestrian Trails and the Pioneer ORV Trail
- Awarded \$10,000 - Polaris Industries grant for trail maintenance equipment
- Awarded \$5,000 – LVD Casino & Resort grant for critical ORV signing within the villages to locate services and the preferred ORV route.
- Awarded \$9,000 – Portage Health Foundation grant. This is a co-sponsored grant with the Ontonagon Township Park for recreational equipment.

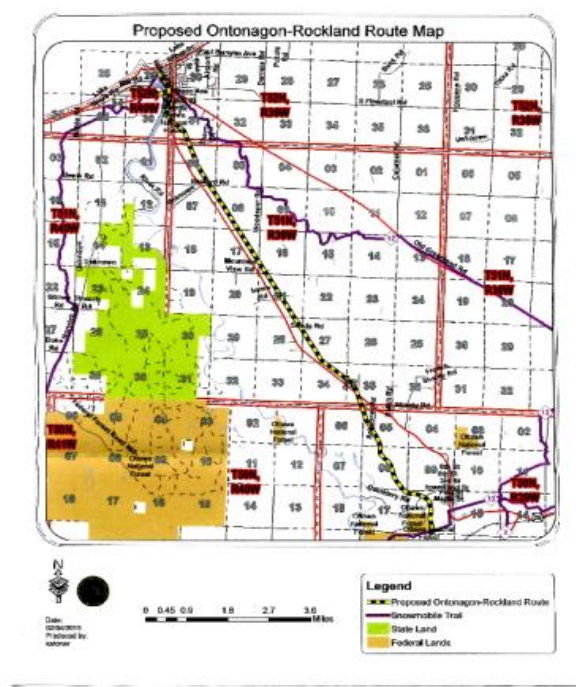
Grand Opening of the LL Multi-use Route on August 22, 2015

- Connects Land O' Lakes to Bond Falls Recreation Area
- 26 Miles in Length
- Includes a fantastic 5 mile ride in the ONF
- Co-sponsored with Land O' Lakes and Watersmeet Chambers, and the Landover ATV Club
- Over 100 riders joined the fun

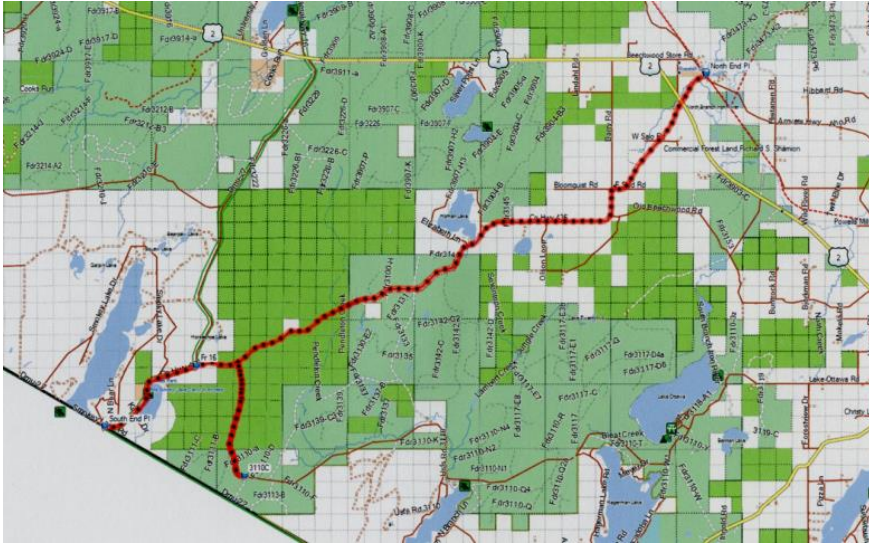


Designation of the New “OR” Multi-Use Route

- To be open 2016
- Connects Ontonagon to Rockland
- Critical economic stimulus to both villages
- Full multi-use route.
- About 13 miles in length
- Includes a bridge crossing over the Ontonagon River providing access to Ontonagon from the south.



Completed the PI Route connecting Phelps to Iron River



Sponsored the 8th Annual Senior fall Color Ride on September 24, 2015

The 8th Annual Senior Color Ride took place on Thursday, September 24, 2015. It was a little wet and cool but once again the Yooper “Sisu” attitude prevailed, and everyone enjoyed the ride and fall colors. We had guests from Alaska, Minnesota, Wisconsin, and down state MI. A total of over 100 people enjoyed the color ride. The morning ride left the Ontonagon Fairgrounds with a little moisture in the air. We all were grateful for the dust control! A stop at the triple trestles was appreciated by everyone, and then we continued the 17 mile ride to the Twin Lakes State Park. The morning riders were joined by the afternoon group at the park to have another great lunch location hosted by the Twin Lakes State Park Staff, with a pasty lunch provided by the generosity of Krupps Mini-Mart. Their pasties and cookies were great as always.



Co-sponsored the 4th annual SPORT ride with MDNR on June 12, 2015.

We had over 100 riders join us on a great ride. It was nice to have family and friends enjoying the day together.



It has been another great year, with a lot of projects completed. All providing more riding adventures for you, but also maintaining a safe ride.

As every year in the past we still have projects that we are working on. Here are a few:

- 1. A new NS connector to be located east of Lake Gogebic that will allow us to use an alternate route to connect the SB and the IM, in place of the East Shore Road. We are working with the Ottawa National Forest and County officials on this project.**
- 2. A new connector west of Lake Gogebic that will connect Marenisco to Bergland. We are working with the Ottawa National Forest and several private land owners to develop an agreeable solution. This will open a route out of Marenisco to the north, which we feel is critical.**
- 3. Complete a new connector north out of Sidnaw that will connect to the current OC route. This will provide a northern route out of Sidnaw to the OC trail.**
- 4. A new connector to Wisconsin that will connect the Ottawa National Forest directly to the Chequamegon-Nicolet National Forest in Wisconsin. This will open many new trail riding opportunities for us in both states.**

Your MI-TRALE board would like to thank you for your support this past year. Together we are and will continue to make a difference in providing safe riding adventures for you and your friends. We encourage you to come and ride your trails. Let us know what you think of them and always let us know how to make them better. Encourage your friends to join MI-TRALE.

Don

President MI-TRALE



Please note: the geocaches placed on both the Courtney Equestrian trails and Pioneer trails have been removed for the winter season. Check back next year, we plan to make them harder to locate...



Interested in Geocaching?

Contact one of us:

Janet Miesbauer - MITRALE.PR@GMAIL.COM

Cathy Wainio - cndwainio@yahoo.com

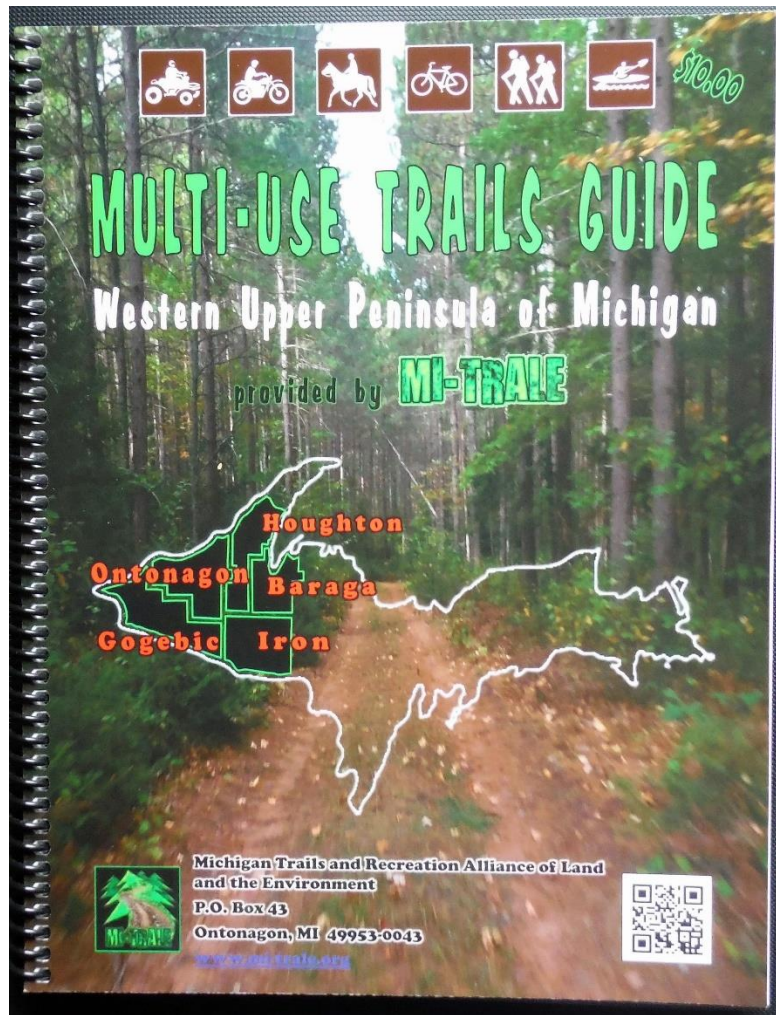


Report Trail problems:

ATV/ORV – Mike Schulz
906-827-3208

Equestrian – Cathy Wainio, Equestrian
Director MI-TRALE
Email at: cndwainio@yahoo.com
H: 906-988-2232 W: 906-358-4577 ext. 4154

A great Holiday gift *(hint hint)*



This is a 142 page guide for multiple types of trail users, of which 89 are detailed maps including Ottawa Forest trails, DNR Trails, club trails, horse trails, mountain bike, hiking and water trails! There is a list of sights to see along the trails, a trip planner with loops mapped out and information on lodging, dining and services and so much more. You will be proud to own one, and don't forget to purchase one as a present for the trail riders on your list.

You can purchase a Guide Book on the website using PayPal or through mail order
There is a list of locations where you can buy the guide too.

Now available on **ebay**.

http://www.ebay.com/itm/2014-Trails-Guide-for-the-Western-UP-of-Michigan-with-Ottawa-Forest-Roads-/201241212550?pt=LH_DefaultDomain_0&hash=item2edae93686#ht_82wt_1153

+++MEMBERSHIP MAP PURCHASE SPECIAL+++

All current memberships will have a 1 time opportunity to purchase one Guide Book for ½ price, that's right only \$5.00 plus shipping.

Contact Map Postmaster Dave Bishop via Email at MITRALE49953@Gmail.com



Courtney Equestrian Trails News

Cathy Wainio EQ Director Reports:

November 2015 - EQ News – for horse lovers and friends.

Hello All,

We MI- TRALE equestrians have had a fantastic summer. We might say it went by too fast, but in fact we enjoyed a very long fall season which gave a chance for more beautiful color rides this season. For me personally there were two highlights of this year's rides; one was a ride on the shore and into Lake Superior on horseback and the other was our Fall Camp-n-Ride, when we rode the Bill Nicholls Multiuse Trail in Ontonagon County, over three railroad trestles. Each trestle rises 100 feet over meandering tributaries of the Firesteel River. The company could not have been better and the colors were amazing.

As this story goes, it was a first for many horses and riders; this "Three Trestle Ride". The October air was brisk and cool, yet refreshing. Amid the conversations I heard comments about the beautiful views and the colors. Voices encouraging and thanking the horse. I heard laughter and silence. I heard the pleasant sound of the hooves of many horses, clomping upon the wooden planks or plodding upon rubber. It was a sound from the past and from the present, echoing off of time. It made me a part of something bigger than myself. There was strength in it. I heard the words "bucket list." The experience was both exciting and calming. We stopped along the way to take pictures, rest and graze. Typically, there were question and answer sessions about each other's horses. We had the pleasure of visiting fellow trail enthusiasts who rode ATV's. Afterwards, we ate dinner at a local restaurant, shared some great pictures and talked about "the next ride". People "friended" each other, and I'm certain it was not just about facebook.

A NOTE ON "SHARED TRAIL ETIQUETTE":

There are motorized trails and there are non-motorized trails and believe it or not, all across the country there are trails that have both. Some people see this as controversial, others simply "share".

You might ask: "How does that work for horse and rider. Well, it can be a problem.

My belief is that "no one person is more important than another". Horses and riders and others need to be ready to share the trails. Horses to some degree can be sacked out, or desensitized through training exercises that help them get used to and unafraid of such surroundings. A person might say that horse riders need to be responsible to control their horses in such an environment. I have said it. But, they need help from other trail users.

Why? Because though horses are gentle giants, athletes and enjoy a partnership with the rider; they are prey animals and by instinct can become afraid of things very quickly, expecting that they might be killed. I have repeated this old saying many times "Horses are only afraid of two things; everything that moves and everything that doesn't". Their instinct is to flee a predator, much like a deer. Think about riding a deer who is being chased by a predator, and how dangerous that could be. How long do you think you could "stay on"? And then think of how peaceful and pleasant it would be if you could befriend a deer, harness it and have it carry you through the wilderness.

MI-TRALE is a Multi-User Group and we want everyone to enjoy their experiences on the trails. This summer we explored multiuse trails in the area on horseback and met a lot of very kind motorized users. We were encouraged by the courtesy and friendliness shown and the kind interest about our horses being there. They took pictures and videos of the horses. There were smiles all around. Yet, there were a couple of them who did not slow down, and without realizing it, they caused a potentially harmful situation.

Janet Miesbauer, our publicist recently posted a "Shared Trail Etiquette Standard" on our Facebook page that would help educate us. Let's be safe out there!

MI-TRALE EQ NEWS:

Janet and I have scouted out some riding areas this summer, and we are not done. We look forward to do more before "the white stuff" flies...and maybe even when it does. We would like to map and mark those trails for your convenience. Do you want more trails to enjoy and to invite others to? We would appreciate any help that you can offer: suggestions of other places to ride or establish trails, help maintaining trails, spotting trail issues and needed maintenance. Any input is appreciated.

We will meet with the Forest Service sometime this month to discuss timeframes of various projects on or near the Courtney EQ Trails...including the long waited "River Crossing". We cannot wait to make that announcement! We wait to hear from the MDNR about the proposed EQ/Multiuse campground. We expect to receive a layout of the proposal to review with them.

PURE MICHIGAN / PROMOTING TOURISM:

Earlier this month, MI- TRALE was invited to participate in a forum to help plan how to promote Michigan's Tourism. We live in an amazing and beautiful place; a vacation in the backyard. If you manage or know of any events that you would like to have listed on the State of Michigan's Pure Michigan web, please let us know. We can get you in touch with the people who are working to promote Horse related fun in Michigan.

Remember, Janet is on the Michigan Dept. of Natural Resources EQ Trails Subcommittee. She is our voice. (Contact info below).

As always, I hope to meet you on the trails. Hope you have a great time whatever you do.

Cathy Wainio, Equestrian Director MI-TRALE

#906-988-2232 Email at: cndwainio@yahoo.com

Janet Miesbauer, EQ Committee and Public Relations MI-TRALE

Member of Michigan Dept. of Natural Resources EQ Trails Subcommittee

#906-231-6424



Cathy & Babe on the left, Janet & Beau on the right; crossing the Firesteel train trestles.

September 20, 2015

Submitted by Cathy Wainio

Today Janet and I were continued our mission of finding new places to ride. We are checking them out before we invite others; wanting to be sure it is a good place to go. Today we visited Misery Bay on Lake Superior, where the Michigan Department of Natural Resources manages a public parking and historic site. Today, we rode our horses "IN" Lake Superior.

It was touch and go...you know the "Flee Factor Instinct" in the horses was present. The horses did a lot of side stepping and hesitating and there were urges to turn and get away. But we took our time...up and down the beach, over logs, up onto a higher grassy area, down into small streams and then back to the parking area where we let the horses rest and graze. Then, we went back for more.

You know how it is encouraging a kid...and how it is the same with a horse?! I have said it "I need to be one inch more stubborn than my horse, at times." She was sure she was not going into the lake, I was sure that she was.

Then "VICTORY", one horse followed the other and we were in the lake. We went deep enough that our boots filled with water and then a bit further. No more sounds of hooves and legs splashing in and out of the water, or waves hitting their legs. All of that was submerges and now I could feel the strength of the water pushing against the horse...rocking us slightly from side to side, with each wave.

The horses did great. You can imagine the thrill and joy and sighs and laughter. I was overjoyed and wet up to my seat. Janet's horse is a bit taller, so she was not quite as wet.

What else did we see? ...a couple came down the river in kayaks, individuals scattered along the beach prospecting. I never saw so many adults digging in the sand. Some were sun bathing, couples visiting.

Then, to investigate the other side of the river and a very long shoreline, we took the long way around the mouth of the river to avoid soft deep stirring sand and sink holes. We stayed a distance from shore, when a little girl with a bright swimming tube excitedly pointed at the horses, and made sure her daddy saw. She followed us along the lake shore, to the edge of the river and we came out of the lake on the opposite side. The little girl stood there with her inner tube hanging off of her waist, across the smooth waters of the river. We waved to each other. Such greetings mean so much. A genuine spontaneous exchange of joy.

Beautiful weather. An amazing day. So thankful for the beauty that God provides, for my horse and friend Janet, and the knowledge and patience I have learned over the years to see things through. Janet and I agreed: these horses could not have done it without each other. -Cathy Wainio



2016 Construction Projects

The board thought that it would be a good idea to give you an overview of the work that was done on our trails this year. So here are the major projects that we have done in 2016, in addition to brushing, signing, and spot filling of the trails.

1. Prepared the LL Trail so that it could be opened to the public in August.
2. Filled in a major water/mud hole on the Pioneer trail just west of Victoria. Although a detour was available all year, there were those of you that like a challenge and soon discovered that over 3 feet of Ontonagon clay/soup is a bit much. We commend your spirit, but the hole(s) are gone. This work was a cooperative funded project with Plum Creek Timber. Their strong support over the years has provided us with many ORV trails.
3. We resurfaced about 2 miles of the OC just outside of Mass City (south of the BN intersection), with mine rock and gravel to raise the trail another 6 inches. We have had issues with this section for several years and grading alone was not a long term fix. We hope that this will take care of the water issues.
4. There were 8 sites of the IM between Watersmeet and Marenisco that were filled, ditched, graded and reshaped to promote proper water runoff.
5. We had 8 miles of the LL trail from Land O' Lakes to Watersmeet graded, with sections identified for spot filling, ditched, graded and reshaped to promote proper water runoff.
6. The 1432nd Engineer Company of the Michigan Army National Guard worked 12 miles of the IM trail east of Watersmeet as part of their training program. This is another example of the importance of working together and helping each other on our trail systems. They use some really big "toys".

MI-TRALE, in cooperation with the MDR, has spent about \$50,000 this year on trail work to ensure a safe trail system for your use. We encourage you to report all trail issues so that we can have safety issues repaired as quickly as possible. We must support each other to maintain our great trail system.



#1 LL Trail Before



#1 LL Trail After



#2 Pioneer Before



#2 Pioneer After



#3 OC Before



#3 OC After



2016 MI-TRALE Banquet



On October 03, 2015 MI-TRALE held your annual banquet at the Algoma Honey House in Greenland, Michigan. This event has always been the highlight of the year, and this year was no exception. The venue was beyond our expectations. The evening had great food and a few short speeches (which is a good thing). Your president (Don Helsel) presented a short (for him) review of the 2015 year of work and fun that we shared. Awards were announced for:

Village of Ontonagon receiving the Unity Award which is given to an organization who works with MI-TRALE to improve Recreational Opportunities



Marv Westerdahl accepting the President's Award. This award is given to someone who has significantly helped MI-TRALE and made a difference.



Make sure you plan on attending the 2016 Annual MI-TRALE Banquet. We'd love to have you join us!



*Next Newsletter
deadline for article &
picture submissions is
3/4/2016.
mitrale.pr@gmail.com*

MDNR Multi-Use Routes & Horses

Equestrians have use of the multi-use routes maintained by MI-TRALE and are found in the trail guide book:

Bill Nicholls Route (BN)

Ottawa East Connector Route (OC)

Sidnaw-Bergland Route (SB)

Iron River-Marenisco Route (IM)

These routes are open to other uses including motor vehicle travel, ATV's, ORV's, motorcycles, hikers and mountain bikes so be prepared and stay alert!
www.michigan.gov/dnr

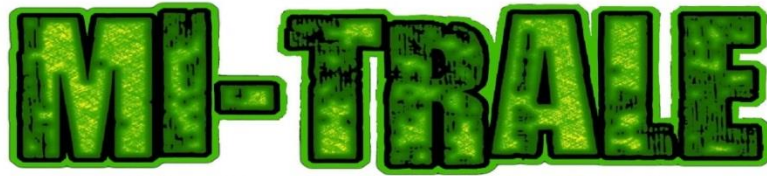
Fact: The History term "All-Terrain Vehicle" or ATV is used in a general sense to describe any of a number of small open motorized buggies and tricycles designed for off-road use. However, the American National Standards Institute (ANSI) defines an ATV as a vehicle that travels on low pressure tires, with a seat that is straddled by the operator, and with handlebars for steering control. By the current ANSI definition, it is intended for use by a single operator, although a change to include 2-seaters (in tandem) is under consideration. - See more at:

<http://www.atv.info/page.cfm?name=ATV%20Facts#sthash.kpLKJb55.dpuf>



MI-TRALE election notifications were emailed to all members. If you did not receive this email, please contact Janet at mitrale.pr@gmail.com

MI-TRALE currently has 2 open Board of Director positions:
Vice-President
Director



Michigan Trails and Recreation Alliance of Land and The Environment

Links you may find handy.....

MI-TRALE Website:

<http://mi-trale.org/>

Follow MI-TRALE on Facebook:

<https://www.facebook.com/pages/MI-TRALE/120763167985263>

Trail Guide on EBAY:

http://www.ebay.com/itm/2014-Trails-Guide-for-the-Western-UP-of-Michigan-with-Ottawa-Forest-Roads-/201241212550?pt=LH_DefaultDomain_0&hash=item2edae93686#ht_82wt_1153

MI-TRALE apparel:

<http://mi-trale.org/club-news/apparel/>



MDOT Highway weather cameras:

<http://mdotnetpublic.state.mi.us/drive/Default.aspx>

Do you have some riding photos you'd like to share? ATV, bicycle, horse, other..... MITRALE is in need of new photos for use in promotional items and the Newsletter. Send them to Janet at:

MITRALE.PR@GMAIL.COM

Dates to Remember, Volunteering & Fun!



ORV?



All meeting dates can be found on our website at: www.mi-trale.org

The MI-TRALE Newsletter
is accepting your news, events & photos
at the email address for the Newsletter:

MITRALE.PR@GMAIL.COM

Please send Janet your submissions.

ATV Terminology:

Four wheeled versions are most commonly called "quads," "four-wheelers" or "ATVs" in the United States and Canada, and "quad bikes" or "quad cycles" in other English-speaking countries.

In Australia, ATVs are also known as "forbys", and in Israel can be called "Polarises" (After the company). Models with three wheels are typically known as "three-wheelers," and ATCs (or less commonly "All-Terrain Cycles" and "trikes"). ATVs can also be considered Off Highway Vehicles (OHV) or Off Road Vehicles (ORV), along with motorcycles. - See more at:

<http://www.atv.info/page.cfm?name=ATV%20Facts#sthash.kpLKJb55.dpuf>



WE NEED TRAIL SPOTTERS!

A trail spotter is someone who will ride the trails throughout the season, especially after storms or strong winds and report back to us if there are downed trees or problem areas. The spotter can also remove the downed trees if they are capable. We need someone from the Iron River or Watersmeet area to check the IM trail which runs between these two towns. We have other trails we need help with also, call Mike if you are interested
906-827-3208